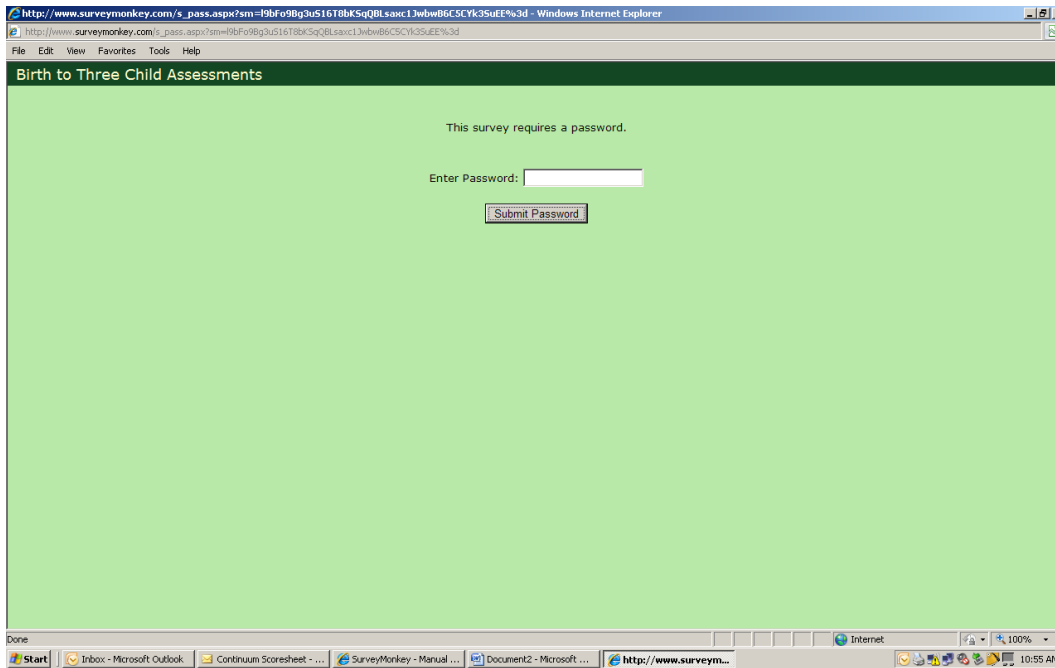


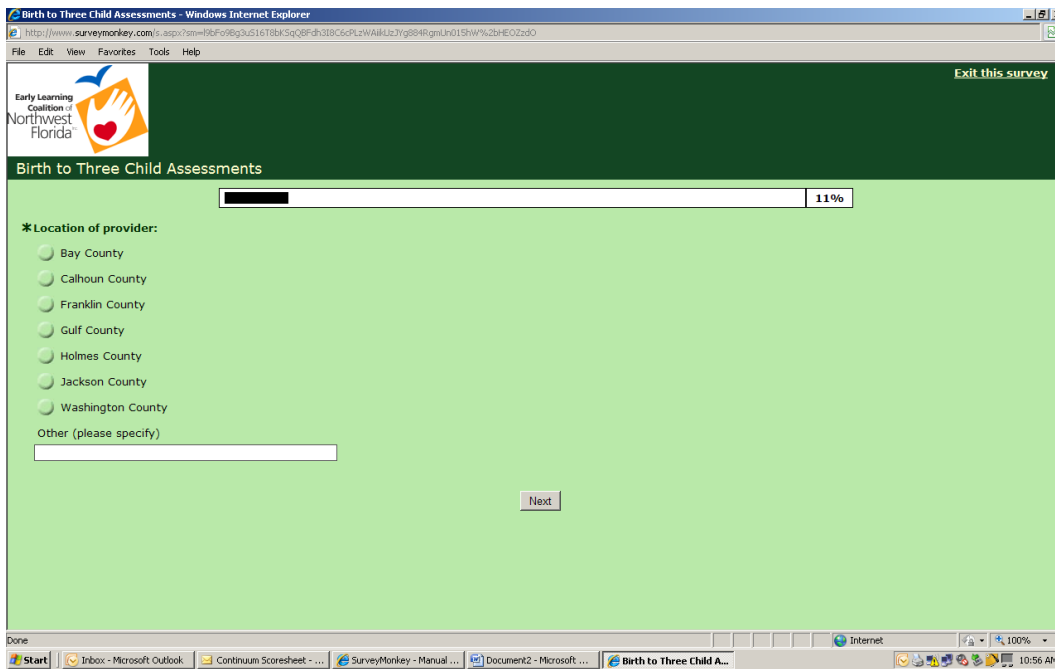
Directions for reporting **Birth to Three Child** assessment scores on-line.

Step 1. Enter password and click on **SUBMIT PASSWORD**.



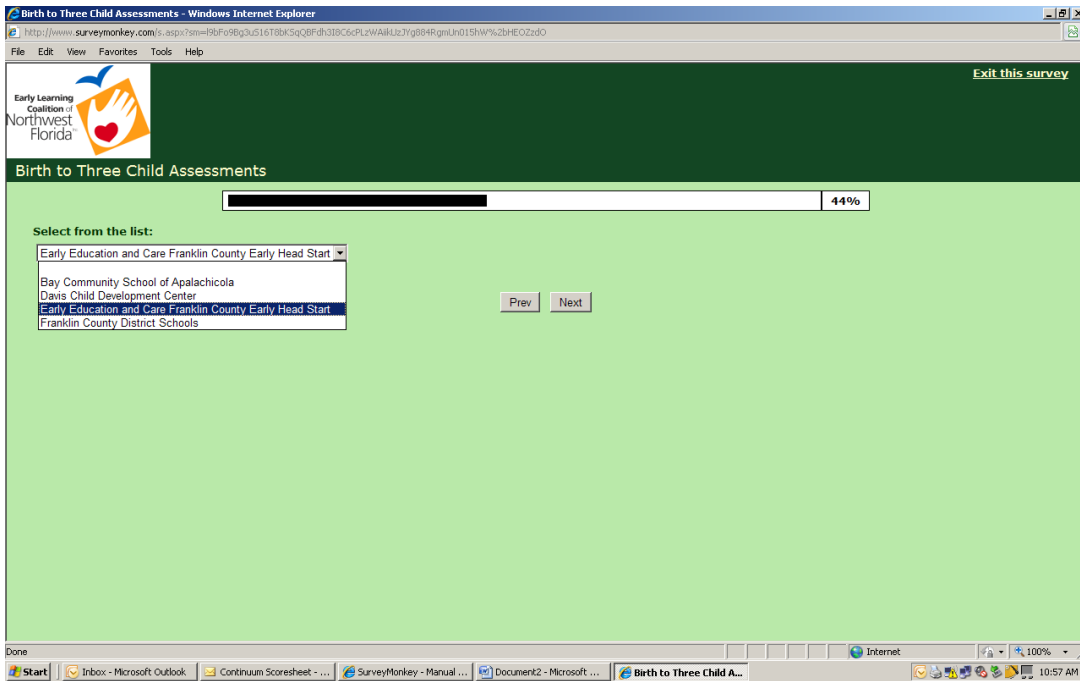
The screenshot shows a web browser window titled "Birth to Three Child Assessments". The address bar contains a long URL starting with "http://www.surveymonkey.com/s_pass.aspx?am=19bf098g3u5161t8kSqQ8Lsaxc13wbw86C5CYk3SuEE%3d". The page content is green and features the text "This survey requires a password." followed by a label "Enter Password:" and a text input field. Below the input field is a button labeled "Submit Password". The browser's taskbar at the bottom shows several open applications, including Microsoft Outlook and SurveyMonkey.

Step 2. Select provider's county and click **NEXT**.

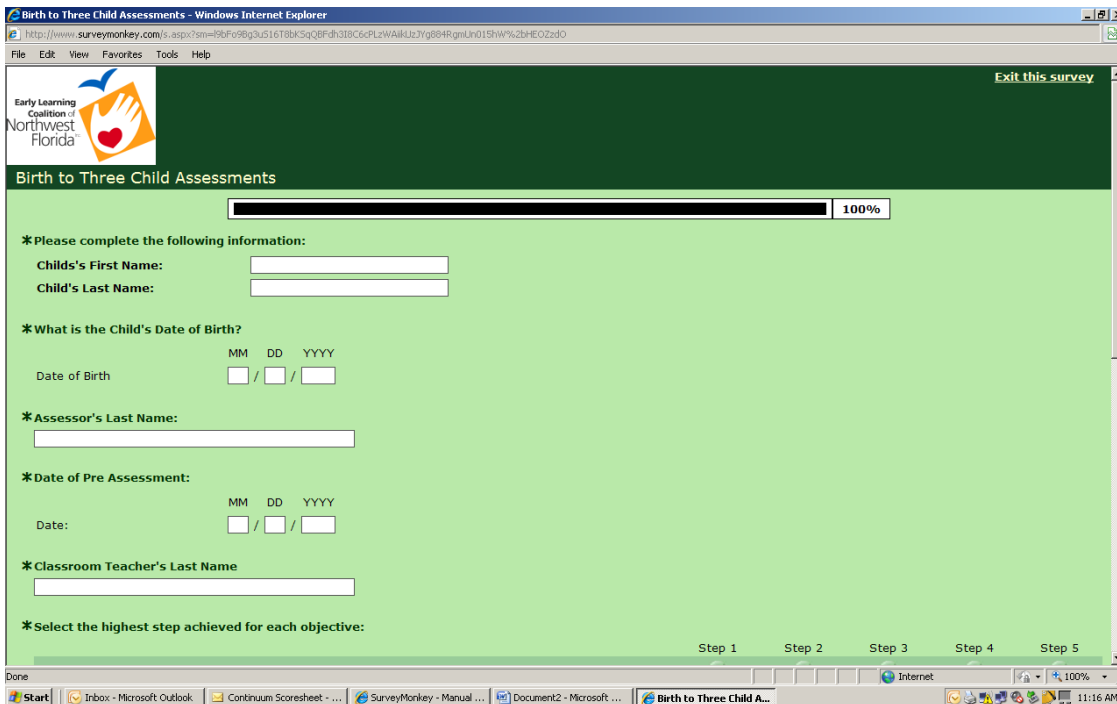


The screenshot shows a web browser window titled "Birth to Three Child Assessments". The address bar contains a long URL starting with "http://www.surveymonkey.com/s.aspx?am=19bf098g3u5161t8kSqQ8Fdh3TDC6cPL2WAiLiz7yg884RqnlLn01SHW%2NHECz2do". The page content is green and features the logo for the "Early Learning Coalition of Northwest Florida" in the top left corner. Below the logo is a progress bar showing "11%". The main content area is titled "Birth to Three Child Assessments" and contains a section labeled "*Location of provider:". This section lists several counties with radio button options: Bay County, Calhoun County, Franklin County, Gulf County, Holmes County, Jackson County, and Washington County. Below the list is a text input field labeled "Other (please specify)". A "Next" button is located at the bottom center of the page. The browser's taskbar at the bottom shows several open applications, including Microsoft Outlook and SurveyMonkey.

Step 3. From the drop-down menu, choose the provider name and choose NEXT.



Step 4. Complete requested information and click DONE.



Step 5. Repeat for next child. Once you have completed the process for all children, close the window by clicking on the in the upper right hand corner.

If you need additional assistance, contact Stephanie Dickson, Child Development Specialist, at (850) 482-9140.